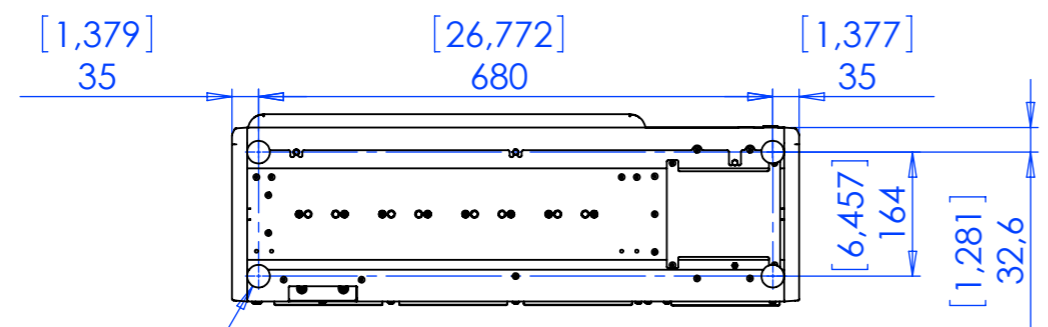


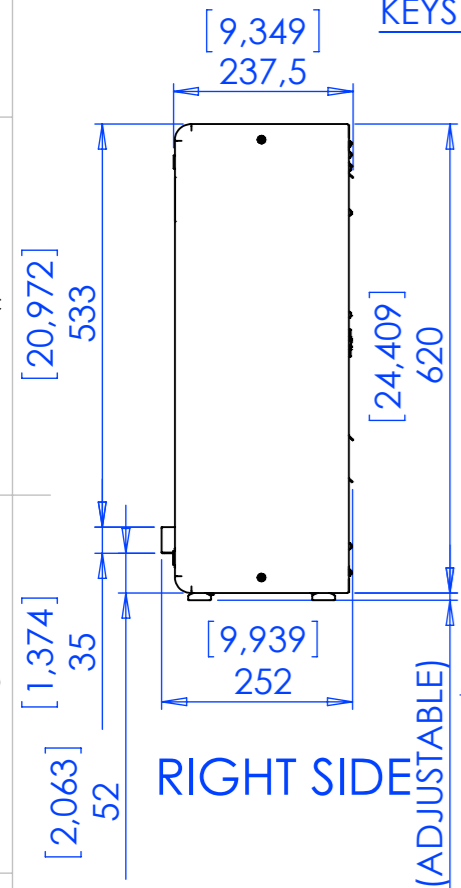
# SMART RIGHT



DOWN SIDE

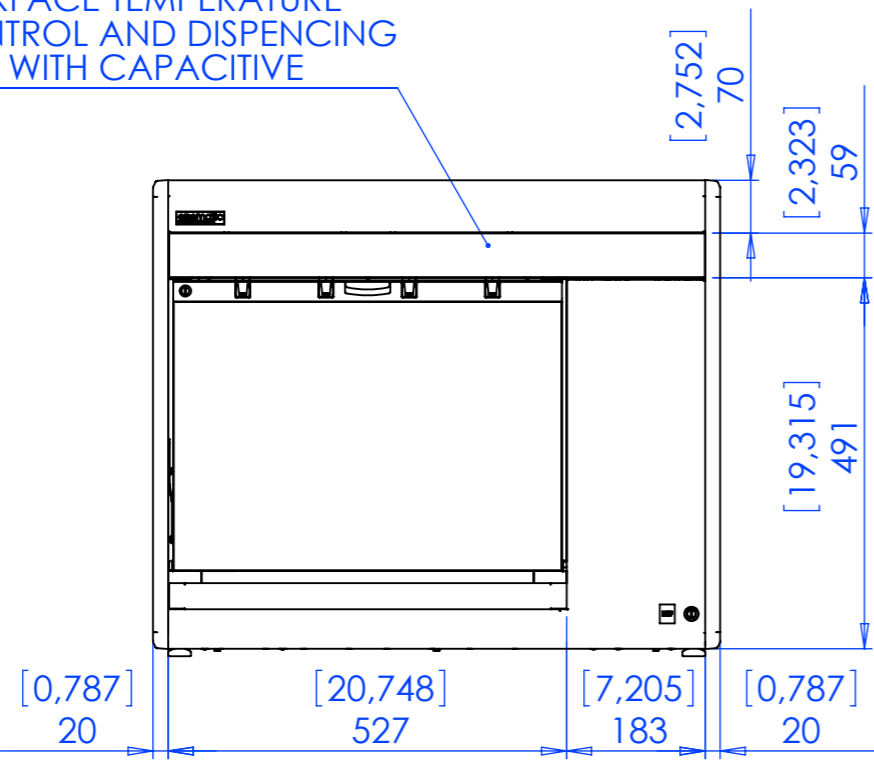
N° 4 RUBBER FEET  $\phi 30$  [1,181]

INTERFACE TEMPERATURE CONTROL AND DISPENSING KEYS WITH CAPACITIVE

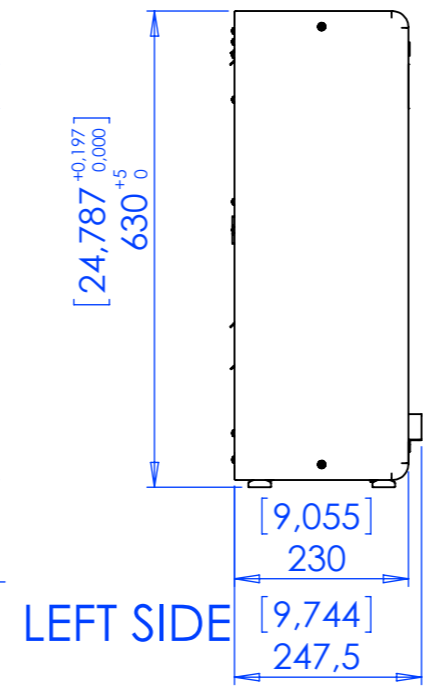


RIGHT SIDE

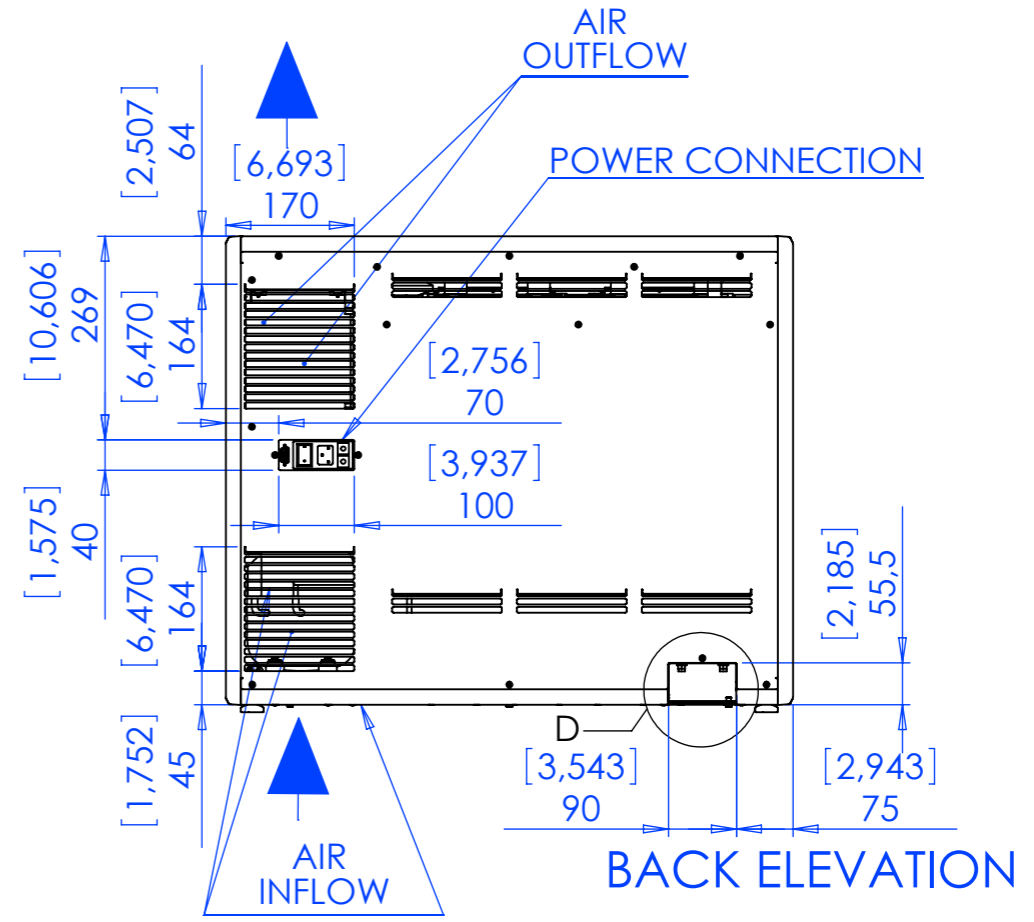
[0,378<sup>+0,197</sup><sub>0,000</sub>] 10<sup>+5</sup> (ADJUSTABLE)



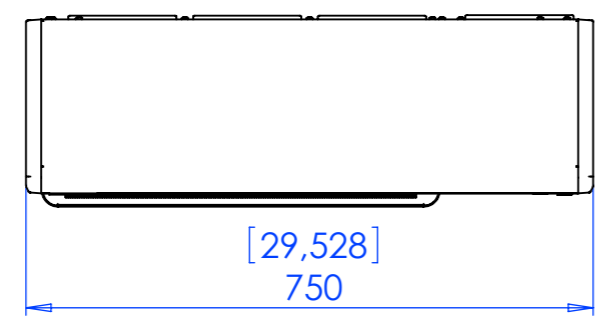
FRONT ELEVATION



LEFT SIDE

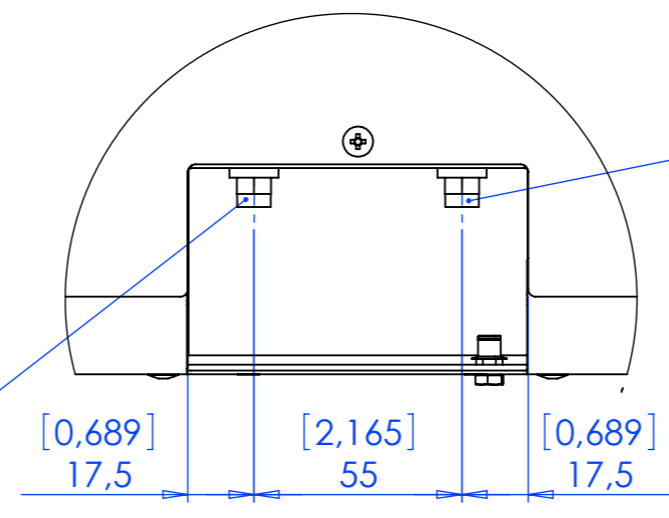


BACK ELEVATION



TOP SIDE

NITROGEN (OR ARGON) GAS TUBE CONNECTION  $\phi 4mm$  0.16 BAR FOR DISPENSING



DETAIL D  
DETAIL 1 : 2

AIR OR NITROGEN (OR ARGON) GAS TUBE CONNECTION  $\phi 4mm$  4 BAR FOR PNEUMATIC ACTUATOR

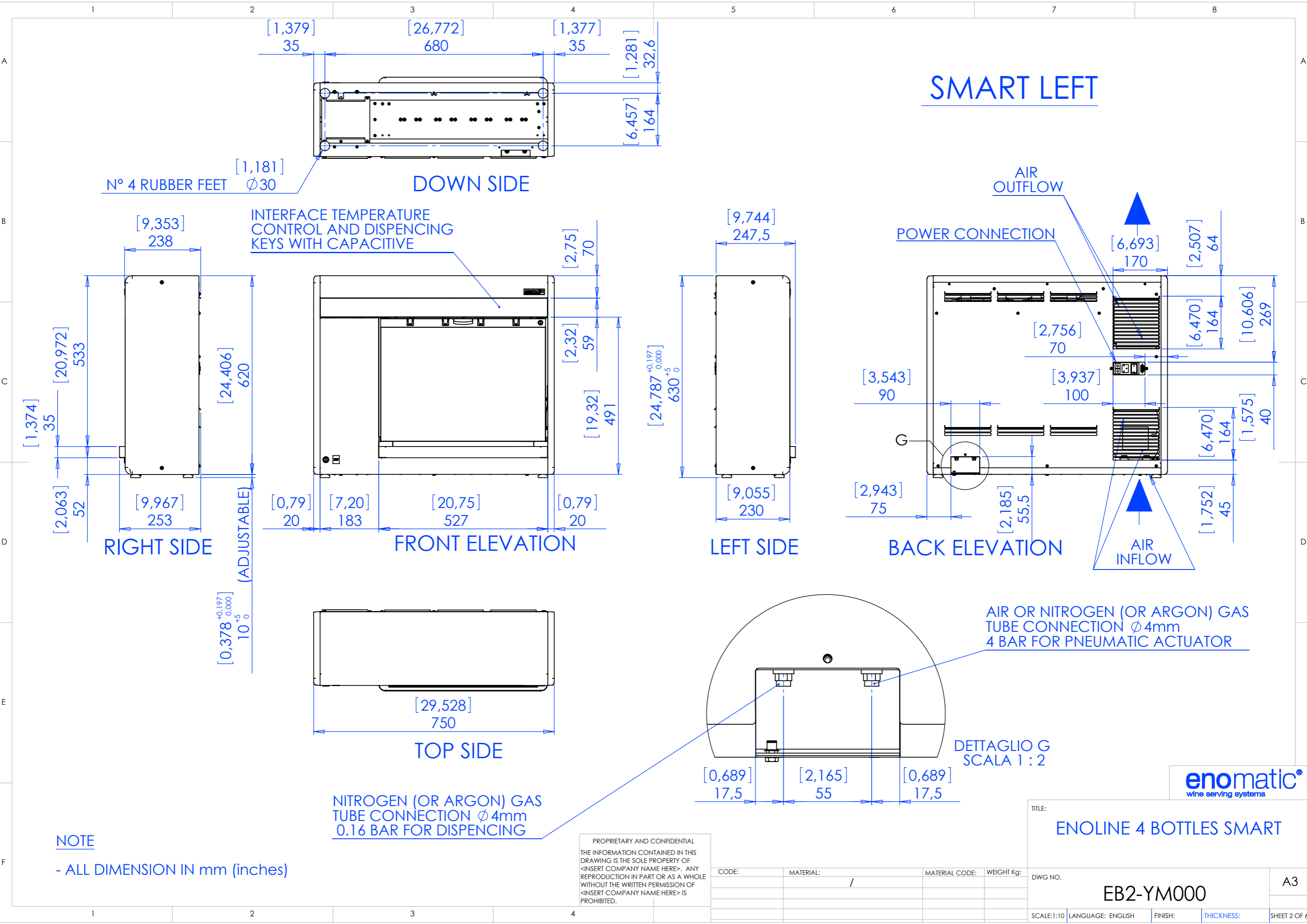
NOTE  
- ALL DIMENSION IN mm (inches)



TITLE:		ENOLINE 4 BOTTLES SMART	
DWG NO.		EB2-YM000	
SCALE:1:10	LANGUAGE: ENGLISH	FINISH:	THICKNESS:
SHEET 1 OF 6		A3	

PROPRIETARY AND CONFIDENTIAL  
THE INFORMATION CONTAINED IN THIS DRAWING IS THE SOLE PROPERTY OF <INSERT COMPANY NAME HERE>. ANY REPRODUCTION IN PART OR AS A WHOLE WITHOUT THE WRITTEN PERMISSION OF <INSERT COMPANY NAME HERE> IS PROHIBITED.

02	DIMENS. INCHES ADDED	13/07/2011	PANICHI		
01	EMISSIONE - ISSUE	18/11/2009	PANICHI		
REV.	DESCRIPTION	DATE	EXECUTOR	CHK'D	APPV'D
CODE:	MATERIAL:			MATERIAL CODE:	WEIGHT Kg:
	/				



# SMART LEFT

N° 4 RUBBER FEET  $\phi 30$

DOWN SIDE

INTERFACE TEMPERATURE CONTROL AND DISPENSING KEYS WITH CAPACITIVE

AIR OUTFLOW

POWER CONNECTION

AIR INFLOW

AIR OR NITROGEN (OR ARGON) GAS TUBE CONNECTION  $\phi 4mm$   
4 BAR FOR PNEUMATIC ACTUATOR

DETTAGLIO G  
SCALA 1 : 2

NITROGEN (OR ARGON) GAS TUBE CONNECTION  $\phi 4mm$   
0.16 BAR FOR DISPENSING

NOTE  
- ALL DIMENSION IN mm (inches)

PROPRIETARY AND CONFIDENTIAL  
THE INFORMATION CONTAINED IN THIS DRAWING IS THE SOLE PROPERTY OF <INSERT COMPANY NAME HERE>. ANY REPRODUCTION IN PART OR AS A WHOLE WITHOUT THE WRITTEN PERMISSION OF <INSERT COMPANY NAME HERE> IS PROHIBITED.

CODE:	MATERIAL:	MATERIAL CODE:	WEIGHT Kg:
	/		

TITLE: <b>ENOLINE 4 BOTTLES SMART</b>		DWG NO. <b>EB2-YM000</b>	A3
SCALE:1:10	LANGUAGE: ENGLISH	FINISH:	THICKNESS:
SHEET 2 OF 6			



ENOLINE 4 BOTTLES SMART			
SIZE	HEIGHT (MIN -MAX)	24,787-24,984 inches	629,5-634,5 mm
	WIDTH	29,528 inches	750 mm
	DEPTH	9,939 inches	252 mm
WEIGHT (Kg)		42	
FINISH MATERIALS		STAINLESS STEEL 304	
ELETRICAL FEATURES	VOLTAGE (V)	110	220
	FREQUENCY (Hz)	60	50
	POWER (W)	150	150
	FUSES	2X8 Amp	2X4 Amp
REFRIGERATION COMPRESSOR SPECIFICATION	REFRIGERATION GAS	R-134A	
	TEMPERATURE CONTROL	ELECTRONIC CONTROLLER	
	DEFROST METHOD	AUTOMATIC VIA ELECTRONIC CONTROLLER	
	METHOD OF DISPLAYNG TEMPERATURE	DIGITAL	
NITROGEN (OR ARGON) GAS SUPPLY PRESSURE FOR DISPENCING		0.16 BAR	
AIR OR NITROGEN (OR ARGON) GAS SUPPLY PRESSURE FOR FOR PNEUMATIC ACTUATOR TO LIFT BOTTLES		4 BAR	
ACCEPTER BOTTLES	HEIGHT	10,024÷14,173 inches	280÷354 mm
	Ø MAX	4,016 inches	93 mm

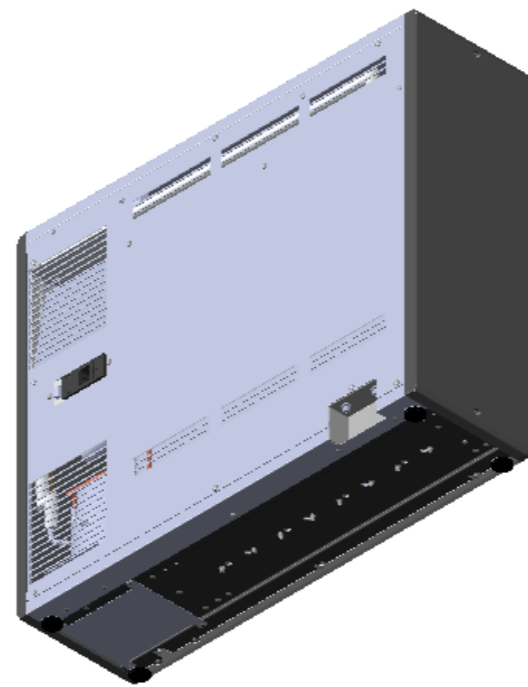
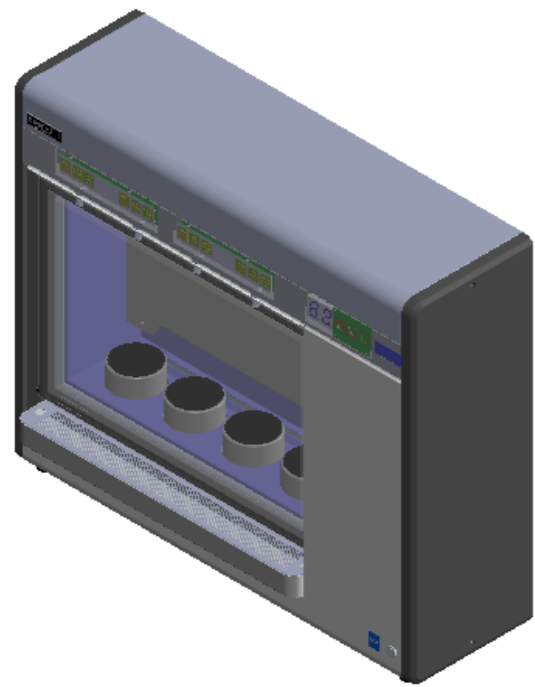
ROOM TEMPERATURE + - 0,5°C	MINIMUM TEMPERATURE REACHBLE AFTER 3 HOURS	
	C°	F°
18	5,5	41,9
20	6,2	43,2
22	6,6	43,9
24	7,0	44,6
26	7,5	45,5
28	7,9	46,2
30	8,2	46,8
32	8,8	47,8

PROPRIETARY AND CONFIDENTIAL  
THE INFORMATION CONTAINED IN THIS  
DRAWING IS THE SOLE PROPERTY OF  
<INSERT COMPANY NAME HERE>. ANY  
REPRODUCTION IN PART OR AS A WHOLE  
WITHOUT THE WRITTEN PERMISSION OF  
<INSERT COMPANY NAME HERE> IS  
PROHIBITED.

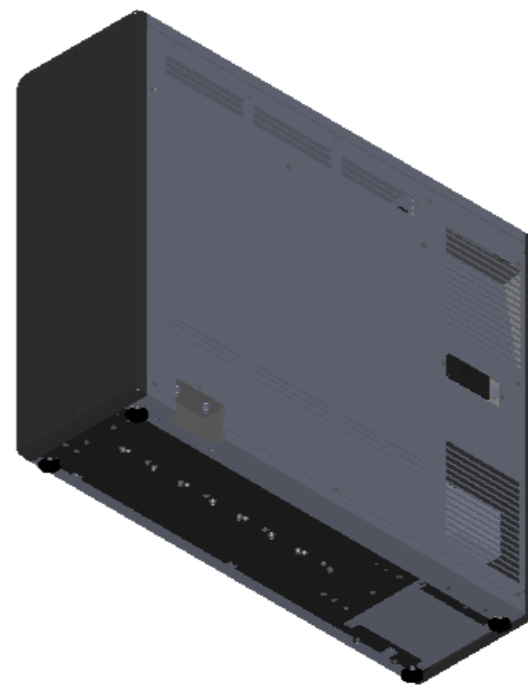
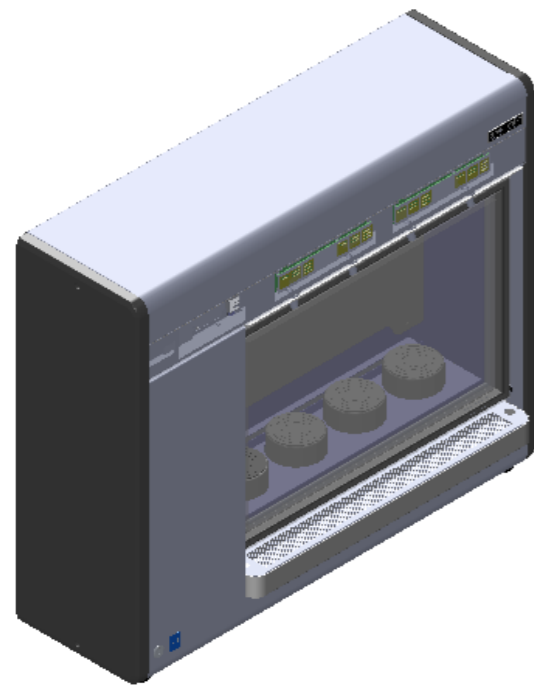
CODE:	MATERIAL:	MATERIAL CODE:	WEIGHT Kg:



TITLE: <b>ENOLINE 4 BOTTLES SMART</b>	
DWG NO. <b>EB2-YM000</b>	A3
SCALE:1:10	LANGUAGE: ENGLISH
FINISH:	THICKNESS:
SHEET 3 OF 6	



## SMART RIGHT



## SMART LEFT

**enomatic®**  
wine serving systems

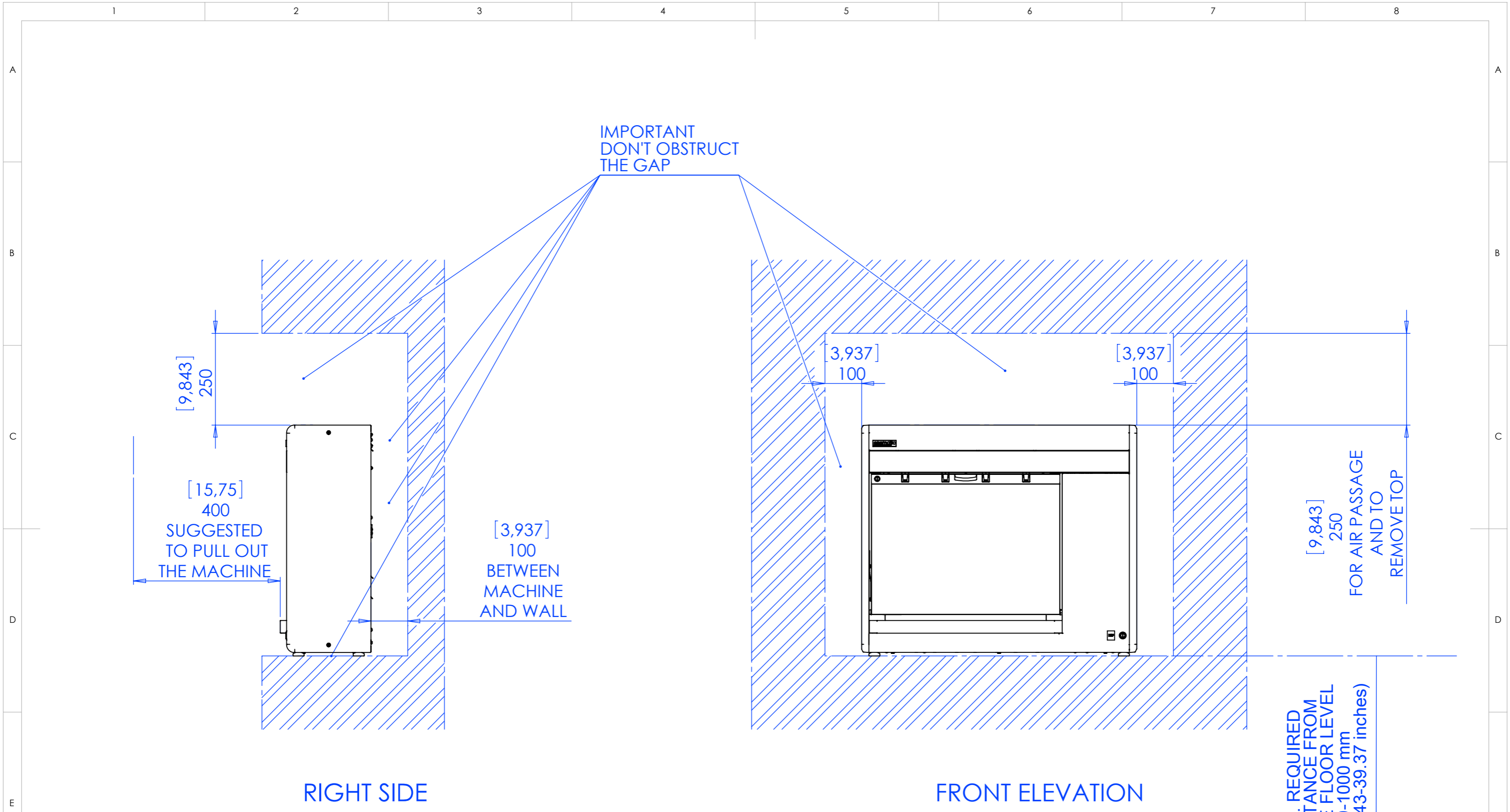
TITLE:  
**ENOLINE 4 BOTTLES SMART**

PROPRIETARY AND CONFIDENTIAL  
THE INFORMATION CONTAINED IN THIS  
DRAWING IS THE SOLE PROPERTY OF  
<INSERT COMPANY NAME HERE>. ANY  
REPRODUCTION IN PART OR AS A WHOLE  
WITHOUT THE WRITTEN PERMISSION OF  
<INSERT COMPANY NAME HERE> IS  
PROHIBITED.

CODE:	MATERIAL:	MATERIAL CODE:	WEIGHT Kg:

DWG NO.	SCALE:1:10	LANGUAGE: ENGLISH	FINISH:	THICKNESS:	SHEET 4 OF 6
<b>EB2-YM000</b>					

A3



1 - EXAMPLE INSTALLATION - POSITIONING IN FORESEEN BOX (DIMENSION IN mm (inches) REFER TO MINIMAL REQUIRED CLEARANCE FOR PROPER PERFORMANCES)



TITLE: <b>ENOLINE 4 BOTTLES SMART</b>	
DWG NO. <b>EB2-YM000</b>	<b>A3</b>
SCALE:1:10	LANGUAGE: ENGLISH
FINISH:	THICKNESS:
SHEET 5 OF 6	

PROPRIETARY AND CONFIDENTIAL  
 THE INFORMATION CONTAINED IN THIS DRAWING IS THE SOLE PROPERTY OF <INSERT COMPANY NAME HERE>. ANY REPRODUCTION IN PART OR AS A WHOLE WITHOUT THE WRITTEN PERMISSION OF <INSERT COMPANY NAME HERE> IS PROHIBITED.

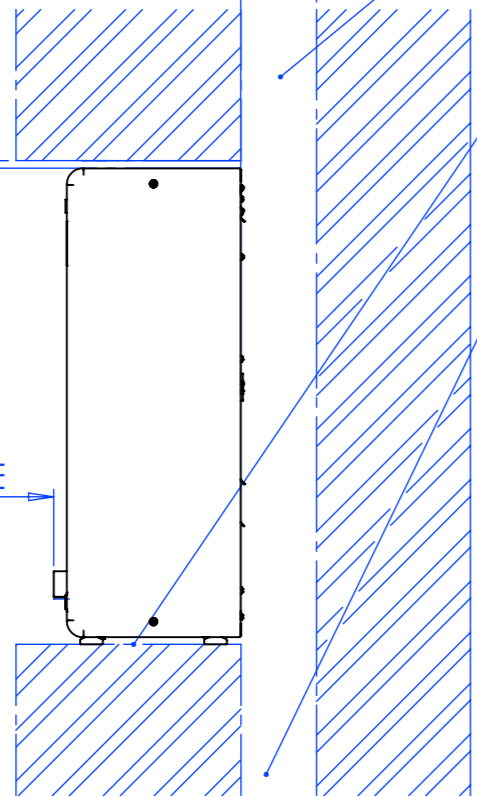
CODE:	MATERIAL:	MATERIAL CODE:	WEIGHT Kg:

[0,394]  
10  
SHELVING ABOVE  
REMOVABLE  
IF POSSIBLE

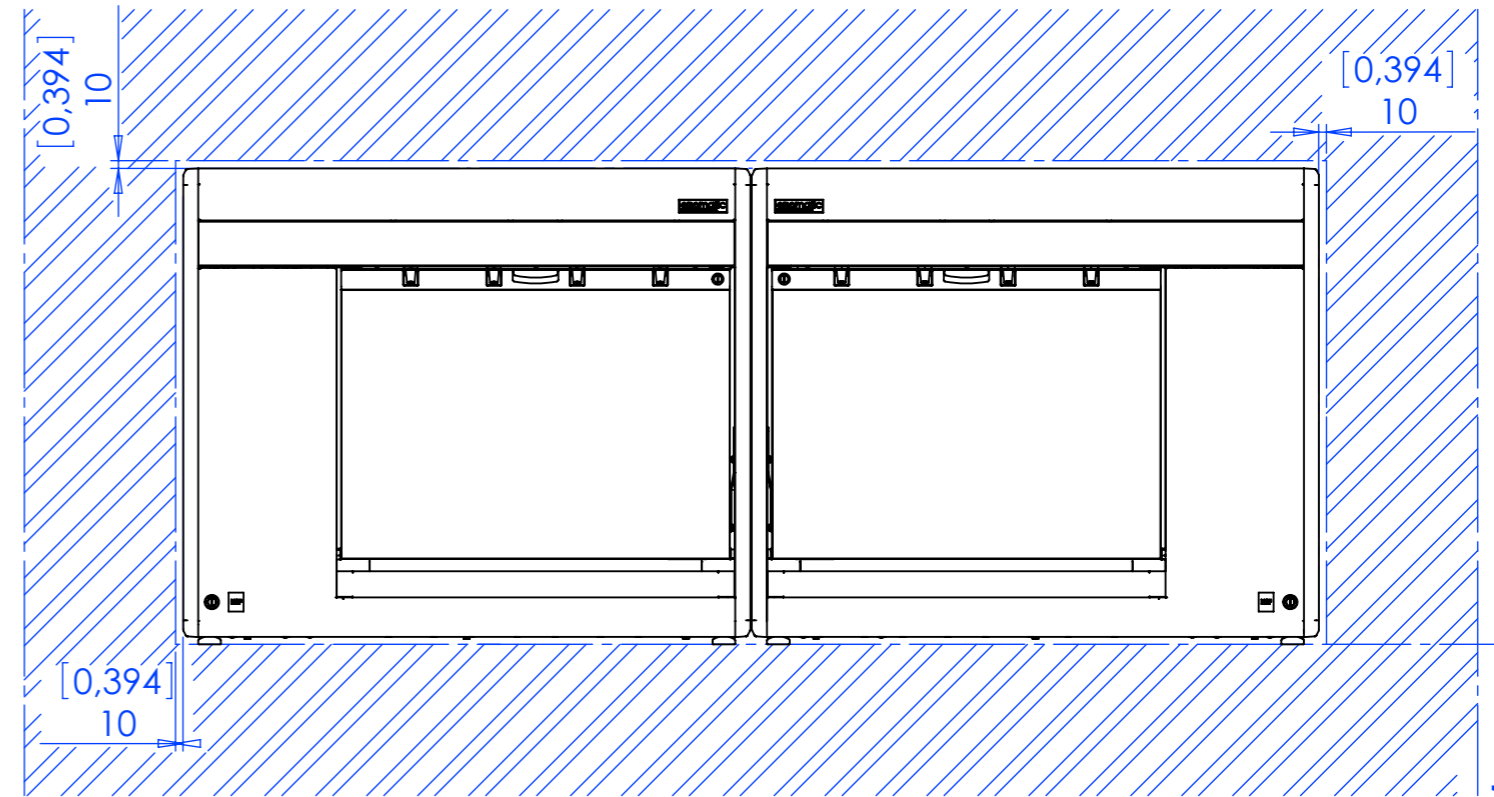
[3,94]  
100  
BETWEEN  
MACHINE  
AND WALL

IMPORTANT  
DON'T OBSTRUCT  
THE GAP

[15,748]  
400  
SUGGESTED  
TO PULL OUT  
THE MACHINE



RIGHT SIDE



FRONT ELEVATION

MIN. REQUIRED  
DISTANCE FROM  
THE FLOOR LEVEL  
900-1000 mm  
(35.43-39.37 inches)

2 - EXAMPLE INSTALLATION - BUILT-IN POSITIONING  
(DIMENSION IN mm (inches) REFER TO MINIMAL REQUIRED  
CLEARANCE FOR PROPER PERFORMANCES)



PROPRIETARY AND CONFIDENTIAL  
THE INFORMATION CONTAINED IN THIS  
DRAWING IS THE SOLE PROPERTY OF  
<INSERT COMPANY NAME HERE>. ANY  
REPRODUCTION IN PART OR AS A WHOLE  
WITHOUT THE WRITTEN PERMISSION OF  
<INSERT COMPANY NAME HERE> IS  
PROHIBITED.

CODE:	MATERIAL:	MATERIAL CODE:	WEIGHT Kg:

TITLE: <b>ENOLINE 4 BOTTLES SMART</b>	
DWG NO. <b>EB2-YM000</b>	A3
SCALE:1:10	LANGUAGE: ENGLISH
FINISH:	THICKNESS:
SHEET 6 OF 6	