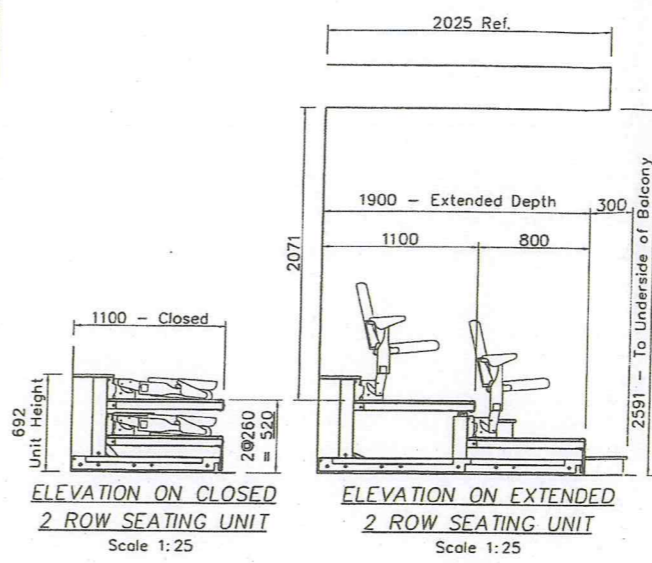


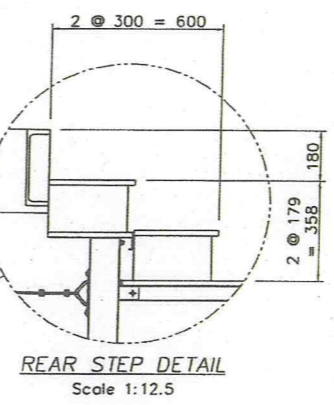
PLAN VIEW ON EXTENDED SEATING UNIT
Scale 1:50

- Seating Key**
- Espace 628-12 Matrix Chair @480mm Seat Centre 14 Total
 - Espace 628-12 Fold Down Chair @500mm Seat Centre 182 Total



ELEVATION ON CLOSED 2 ROW SEATING UNIT
Scale 1:25

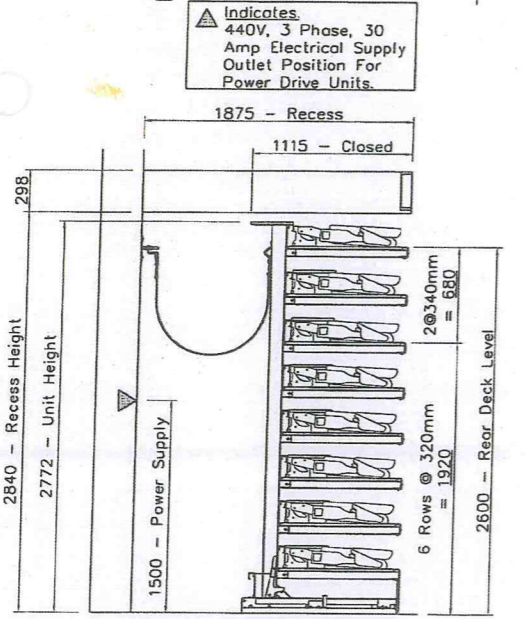
ELEVATION ON EXTENDED 2 ROW SEATING UNIT
Scale 1:25



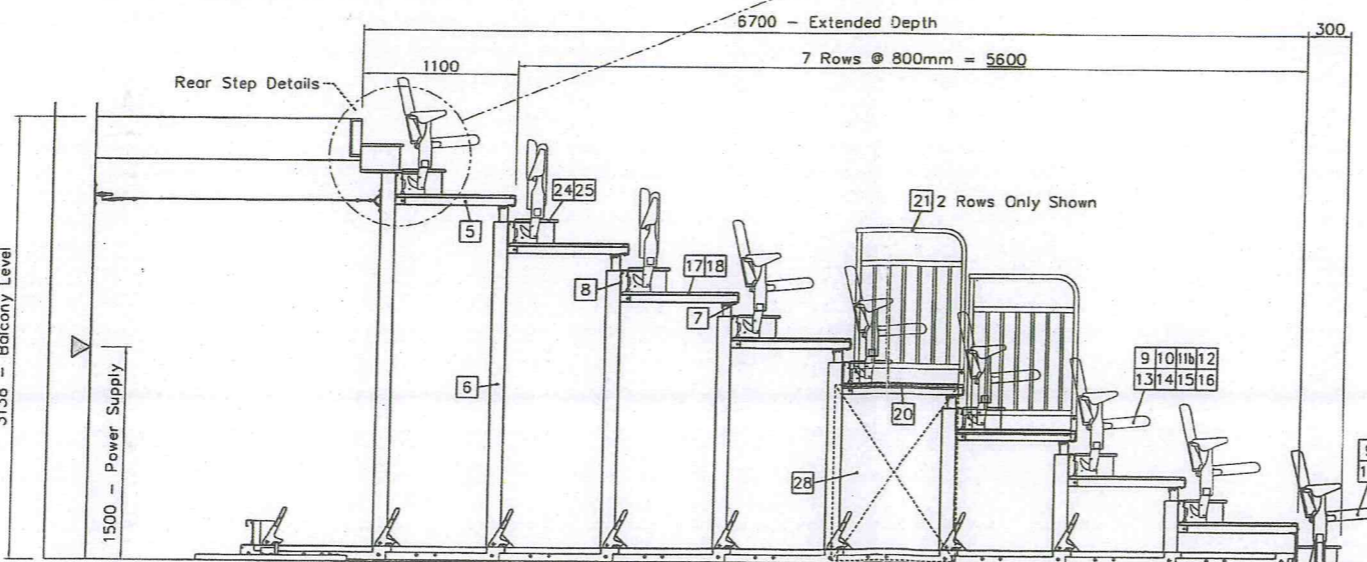
REAR STEP DETAIL
Scale 1:12.5

| Ref | Retractable Seating Specification | |
|-----|-----------------------------------|--|
| 1 | Unit Type | a TX-RPO (Recessed Power Operated) b TX-F (Fixed Manually Operated) |
| 2 | Row Rise | 260mm, 320mm & 340mm See Section |
| 3 | Row Depth | 800mm |
| 4 | No Of Rows | a 8 b 2 c 3 |
| 5 | Rear Deck Type | Standard Platform |
| 6 | Understructure Finish | EPC RAL 7043 Semi Gloss Grey |
| 7 | Front Beam Finish | EPC RAL 7043 Semi Gloss Grey |
| 8 | Rear Beam Finish | Standard - Pre-Galvanised (Silver) |
| 9 | Seat Style | Espace 628-12 (Upright Geometry) |
| 10 | Seat Centres | 480mm & 500mm (See Plan) |
| 11 | Seat Type | a Matrix b Manually Operated Fold Down |
| 12 | Seat Fabric Colour | Bute Elgin CF667 Colour - Ref. 2323 (Sea Green) |
| 13 | Seat Frame Finish | EPC RAL 7043 Semi Gloss Grey |
| 14 | Arm Type & Finish | Standard ABS - Black |
| 15 | Seat Numbers | n/a |
| 16 | Row Letters | n/a |
| 17 | Deckboards | 18mm Plywood |
| 18 | Deckboard Finish | Carpet Heckmondwike Supacord Colour - Onyx |
| 19 | Deck Infills | n/a |
| 20 | Deck End Trim | 36 Pc - Integral With Side Rail Socket |
| 21 | Side Rails & Finish | 36 Pc - Removable Type D RAL EPC 7043 |
| 22 | Front Rails & Finish | n/a |
| 23 | Rear Rails & Finish | n/a |
| 24 | Aisle Steps & Width | a 26 Pc - 1100mm Wide b 4 Pc - Removable 1100mm Wide |
| 25 | Aisle Lights | n/a |
| 26 | Front Fascias | n/a |
| 27 | Removable Aisle Infill Panels | n/a |
| 28 | Side Drapes, Material, Colour | 16 Pc - Removable (8 Row Unit Only) John McKinnel Colour : Black |
| 29 | Side Panels, Material, Colour | n/a |
| 30 | Rear Panels, Material, Colour | n/a |
| 31 | Running Boards | n/a |
| 32 | Unit Moving Trucks | n/a |
| 33 | Seating Capacity | 14 (Type 11a) + 112 (Type 11b) - Bank 1 + 18 (Type 11b) - Bank 2 (2 Off) + 17 (Type 11b) - Bank 3 (2 Off) |

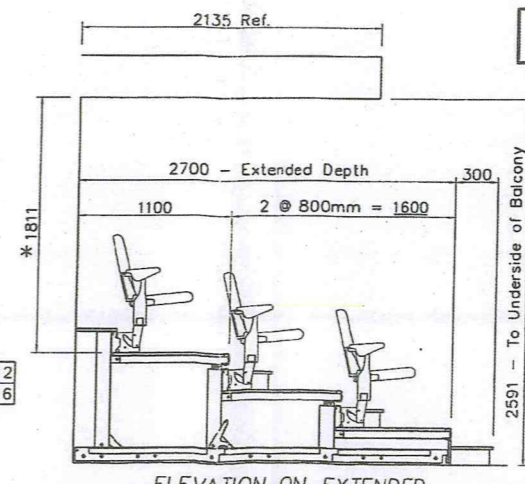
TOTAL SEATING CAPACITY : - 196



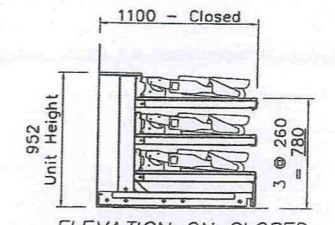
ELEVATION ON CLOSED 8 ROW SEATING UNIT
Scale 1:25



ELEVATION ON EXTENDED 8 ROW SEATING UNIT
Scale 1:25



ELEVATION ON EXTENDED 3 ROW SEATING UNIT
Scale 1:25



ELEVATION ON CLOSED 3 ROW SEATING UNIT
Scale 1:25

* RESTRICTED HEADROOM APPLIES